

# HOME PACKAGE PLUS

## HOME & LAND PACKAGE

Artists impression only

BED 4 BATH 2 GARAGE 2

### LOT 203

Cirrus Drive, Austral, NSW, 2179

**\$1,073,900.00\***

House Price **\$353,900** - Land Price **\$720,000** (Includes **\$30,000.00 Landscaping Bonus**)

Land Size 396 Sqm | House 180.7 Sqm

- Standard Site costs and fixed BASIX Costs included\*\*
- Concrete Driveway & Separate Entry Path
- Fully Ducted Air Conditioning
- 2550mm High Ceilings to ground floor only
- Combination of Carpet and Tiling
- Vertical or Roller blinds to all clear glazed windows
- 20mm Kitchen Stone Benchtops (excludes waterfall panels)
- 6 Months Maintenance Warranty (Twice the industry average)

#### Contact details:

Julie Hoang

M: 0422 866 839

E: [jhoang@jandsonhomes.com.au](mailto:jhoang@jandsonhomes.com.au)

Site address: Lot 203 Cirrus Drive, Austral, NSW, 2179

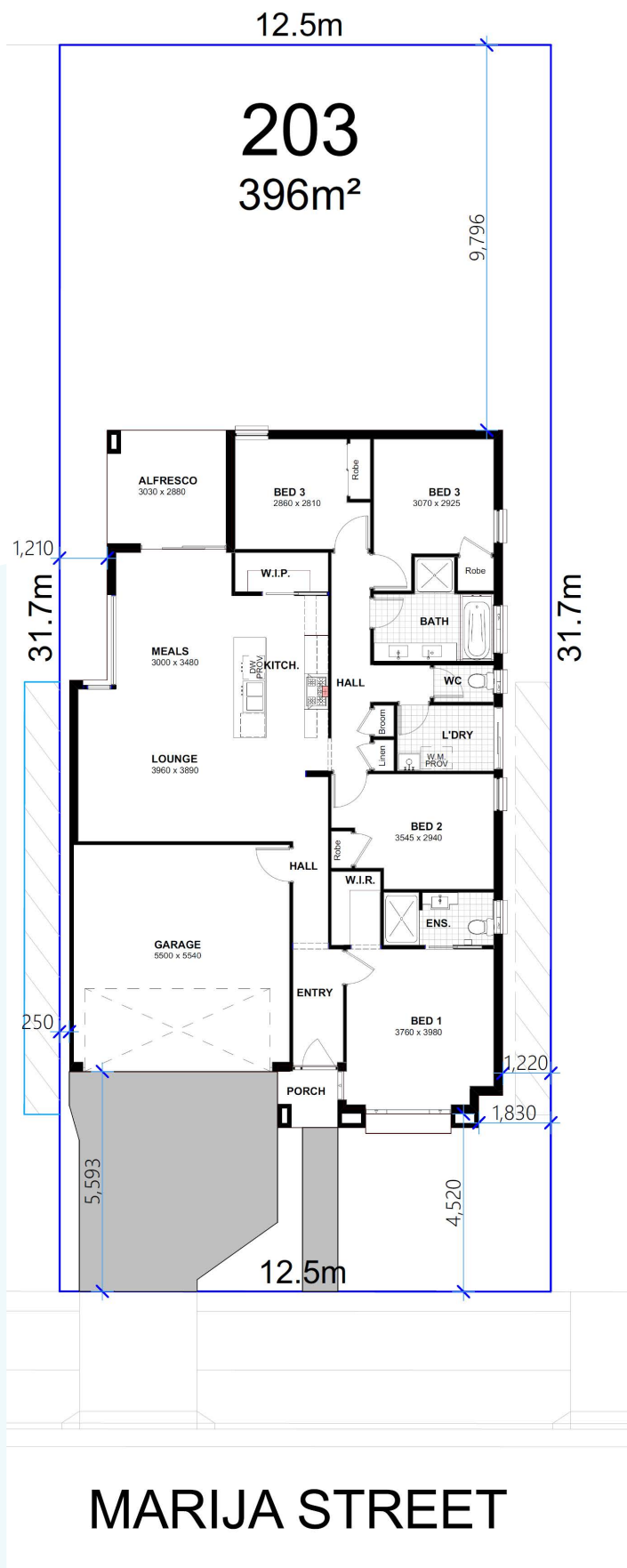
Office address: 45 Moon Street, Leppington, NSW, 2179

[www.jandson.com.au](http://www.jandson.com.au)



HOME PACKAGE PLUS

BY JANDSON



Site Plan

## STANDARD INCLUSIONS

- Coloured Concrete Driveway and front entry Path.
- Carpet and Tiling throughout internal living areas as applicable
- Stainless Steel Kitchen Appliances
- Tiled Splashback to underside of Kitchen overhead Cupboards.
- Washable 3-coat paint system to the internal walls
- Stegbar Semi-Frameless Shower Screens
- Flick mixer taps to all Vanities, Baths and Showers applicable
- Close coupled Toilet seats
- Polytec Sheen or Matt finish to Kitchen Cupboards
- Remote Control Garage Door Opener with two (2) remotes
- Rinnai continuous flow gas hot water service.
- 2550mm High Ceilings to ground floor only
- Alarm System
- Heavy duty Sarking
- Bradford wall and ceiling insulation as applicable to the design. R ratings as required only.  
*Plus much more. Please ask your sales consultant for more details.*

## LOT 203 DEVELOPMENT DATA

<b>SITE AREA</b>	<b>396.0sqm</b>
LIVING AREAS	137.5sqm
GARAGE	32.29sqm
PORCH	02.19sqm
ALFRESCO	08.70sqm
<b>TOTAL</b>	<b>180.7sqm</b>